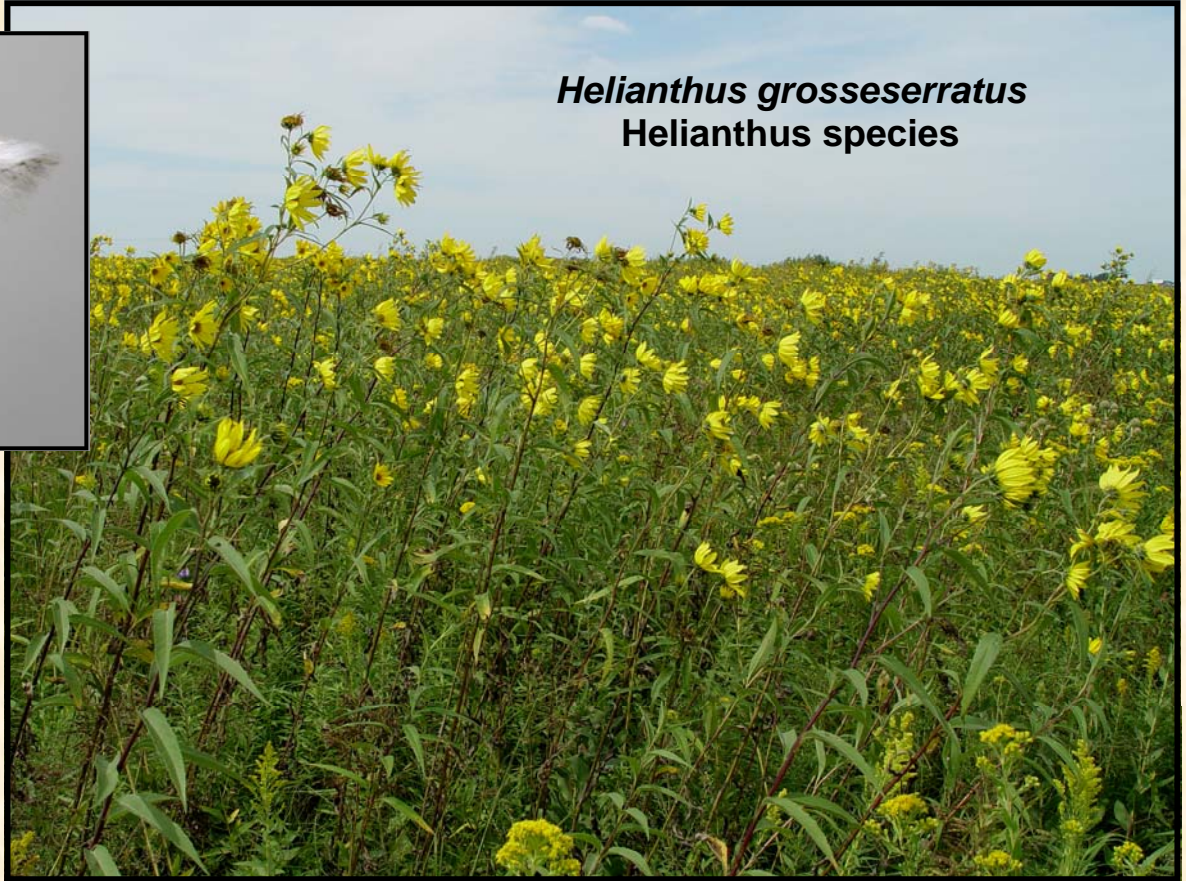


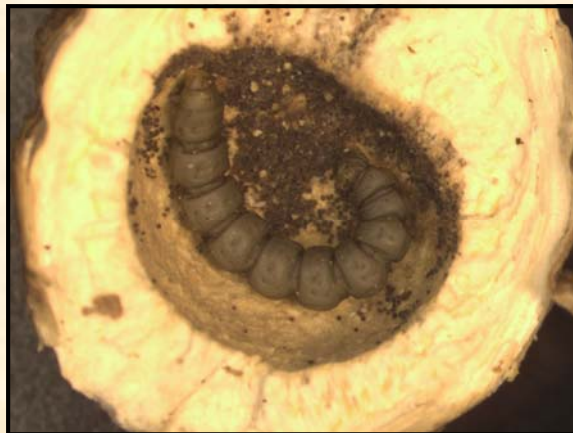
Bucculatrix simulans



Helianthus grosseserratus
Helianthus species



© MJHatfield



Bucculatricidae; *Bucculatrix simulans* causes stem gall induction on Asteraceae, winter as larvae, then the following spring leave the gall to wander, spin a cocoon, pupate, and later emerge. This species was described from material reared from *Helianthus annuus* at East St. Louis, Illinois, by Mary Murtfeldt, around the turn of the 20th century. It was also mentioned in Braun's revision that specimens of *B. simulans* reared from "sunflower" were known from Austin, Texas.
Identification and information provided by Dr. T. Harrison